

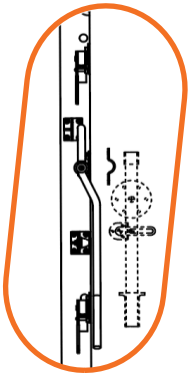
CONTROLLED ATMOSPHERE SLIDING DOORS WITH GAS-TIGHT SEALING

(CA SD)

ALL PRICES IN US DOLLARS, DO NOT INCLUDE VAT. 2 MM THICK METAL DOOR FRAME INCLUDED

22.09.2023

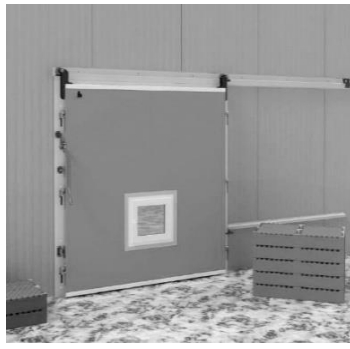
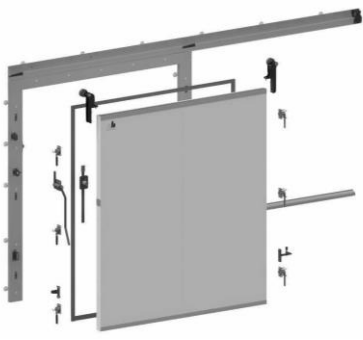
- Gas-tight sliding doors for fruit and vegetable controlled atmosphere storage are an impressive blend of world's best expertise with Russian engineering skills.
- The gas-tightness is guaranteed by 6 mechanical eccentric clips and a two-chamber French-made rubber seal gaskets by Fermod, the world leader in the production of refrigeration doors hardware.
- Stand tests showed that the gas-tight door can withstand pressure up to 500 pa with its solid frame, French-made rubber sealing, and 6 reinforced clips developed by ph insulation engineers. Corrosion-resistance of the frame against high humidity and acids is guaranteed by 2 mm thick AISI 304 stainless steel.



	INSTALLATION OPENING, HEIGHT, MM	INSTALLATION OPENING, WIDTH, MM				
		2200	2400	2600	2800	3000
80	2 400	2 572	2 706	2 893	3 040	3 178
	2 600	2 781	2 933	3 146	3 313	3 469
	2 800	3 000	3 170	3 412	3 599	3 775
	3 000	3 232	3 421	3 695	3 902	4 099
	3 200	3 474	3 674	3 995	4 232	4 448
100	2 400	2 620	2 761	2 955	3 110	3 255
	2 600	2 838	2 997	3 219	3 394	3 560
	2 800	3 066	3 245	3 497	3 693	3 880
	3 000	3 308	3 507	3 792	4 011	4 219
	3 200	3 561	3 770	4 139	4 388	4 617
120	2 400	2 669	2 816	3 017	3 179	3 332
	2 600	2 895	3 062	3 292	3 476	3 650
	2 800	3 132	3 319	3 581	3 788	3 984
	3 000	3 383	3 593	3 888	4 119	4 340
	3 200	3 641	3 876	4 249	4 504	4 748
150	2 400	2 741	2 898	3 110	3 283	3 448
	2 600	2 980	3 159	3 401	3 598	3 786
	2 800	3 231	3 431	3 708	3 929	4 142
	3 000	3 496	3 721	4 034	4 281	4 520
	3 200	3 774	4 022	4 383	4 642	4 908

DOOR CATALOGUE CODES

CA SD **CONTROLLED ATMOSPHERE SLIDING DOOR**
 M **DOOR FOR MEDIUM TEMPERATURE COLD ROOMS**
 RIGHT/LEFT **SLIDING DIRECTION TO THE RIGHT/TO THE LEFT**
 H **REINFORCED DOOR HANDLE**



EXAMPLE OF DOOR CATALOGUE CODE:

CA SD 2400 3000 150 RAL9003/RAL9003 0 M RIGHT H/H

DOOR TYPE	DOORWAY WIDTH	DOORWAY WIDTH	DOOR THICKNESS	COVERING MATERIAL		THRESHOLD HEIGHT	TEMPERATURE	DIRECTION OF THE OPENING	HANDLE	
				EXTERIOR	INTERIOR				INTERIOR	EXTERIOR
CA SD	2400	3000	150	RAL9003	RAL9003	0	M	RIGHT	H	H

ADDITIONAL OPTIONS

ITEM	PRICE
WINDOW	439
FRAME INSTALLATION HARDWARE TO INSULATED SANDWICH PANELS	52
FRAME INSTALLATION HARDWARE TO A BRICK WALL	8
DOOR BLADE MATERIAL: AISI 304, PRICE FOR 1 SQ. M	32
STAINLESS STEEL METALWARE KIT, PRICE FOR 1 SQ. M	3

FACTORY INSTALLED BUMPERS

BUMPER MATERIAL	THICKNESS, MM	PRICE FOR SQ. M	PRICE FOR RUNNING METER	
			BOTTOM 0,25 M	BOTTOM 0,5 M
AISI 304	1,5	110	27	55
AISI 430	1,5	73	18	36
ALUMINIUM CHECKER PLATE	1,5	50	13	25
FLAT HDP PLASTIC	4,0	33	8	16

RAIL COVER FOR CA SD WITHOUT ELECTRIC DRIVE

MATERIAL	RAIL COVER WIDTH, MM				
	2200	2400	2600	2800	3000
RAL	61	63	66	68	70
AISI 304	115	121	127	135	141
AISI 430	93	98	102	107	112

RAIL COVER FOR CA SD WITH ELECTRIC DRIVE

MATERIAL	RAIL COVER WIDTH, MM				
	2200	2400	2600	2800	3000
RAL	71	74	78	82	85
AISI 304	157	166	176	188	198
AISI 430	120	127	134	142	149

PACKAGING

ITEM	PRICE
STRETCH-WRAP	INCLUDED IN DOOR PRICE
CARDBOARD PACKAGING	CALCULATED INDIVIDUALLY FOR YOUR ORDER
WOODEN PACKAGING	CALCULATED INDIVIDUALLY FOR YOUR ORDER

